

Alto/Bari Sax

# Samba Otoño

Dr. Selfridge

Medium Samba

♩ = 96

Am7 D7 Gmaj7 Cmaj7 F#m7(b5) B7(b9)

7 Em E7 Am7 D7 Gmaj7 Cmaj7

13 F#m7(b5) B7(b9) Em Em F#m7(b5) B7(b9)

19 Em Em Am7 D7 Gmaj7 Cmaj7 F#m7(b5)

26 B7(b9) Em Cmaj7 F#m7(b5) B7(b9) Em E7

Improv Option 1: Major Blues Scale

33

Use the b3 only as a passing or neighbor tone

Solo Ideas

40 1. 2.

46 3. 4.

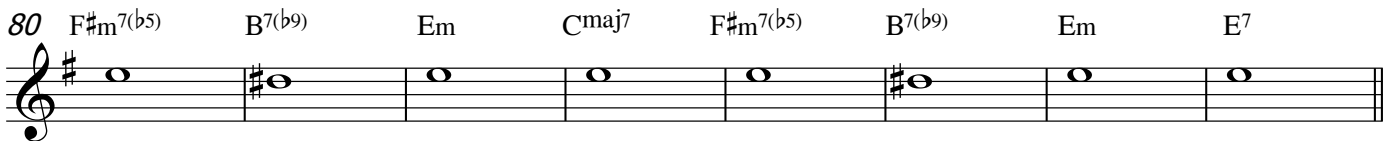
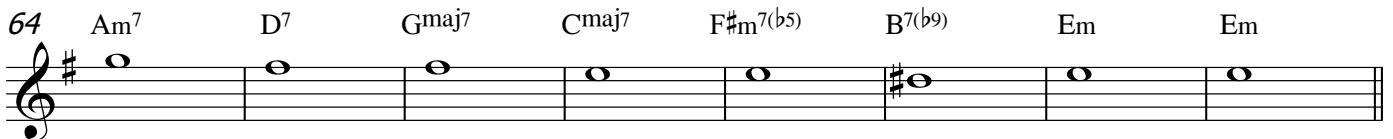
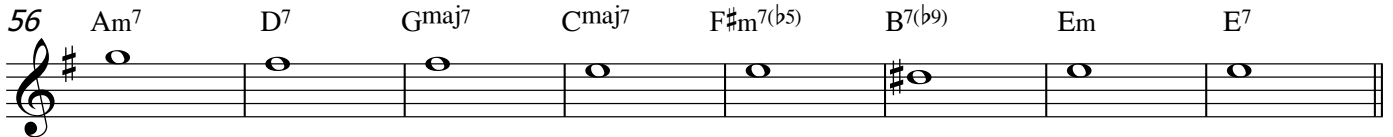
### Improv Option 2: Major Scale



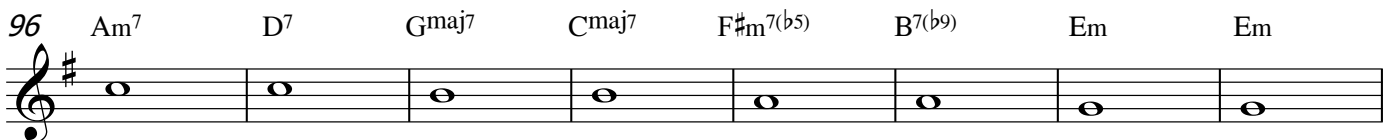
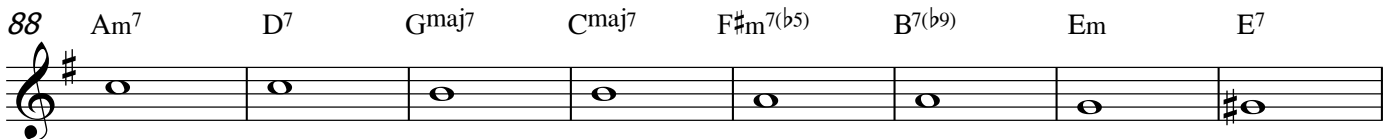
We can use the entire major scale, while emphasizing CHORD TONES as they change each measure. The series of chord tones written below is called a GUIDE TONE LINE. This means each chord tone moves smoothly to the next, usually by step.

CHORD TONES consist of the 1-3-5-7 of the chord. The chord tone that we begin with below is the seventh (7) of the first chord.

### Guide Tone Line 1



### Guide Tone Line 2



LEVEL UP: Learn the Chord Tones for Every Chord

120 Am<sup>7</sup> D<sup>7</sup> Gmaj<sup>7</sup> Cmaj<sup>7</sup> F#m<sup>7(b5)</sup> B<sup>7(b9)</sup> Em E<sup>7</sup>

A musical staff in treble clef with a key signature of one sharp (F#). It contains eight measures of music, each with a chord symbol above it. The notes are represented by circles on the staff lines. Measure 1: Am7 (A, C, E, G). Measure 2: D7 (D, F#, A, C). Measure 3: Gmaj7 (G, B, D, F). Measure 4: Cmaj7 (C, E, G, B). Measure 5: F#m7(b5) (F#, A, C, E). Measure 6: B7(b9) (B, D, F#, A, C). Measure 7: Em (E, G, B, D). Measure 8: E7 (E, G#, B, D).

128 Am<sup>7</sup> D<sup>7</sup> Gmaj<sup>7</sup> Cmaj<sup>7</sup> F#m<sup>7(b5)</sup> B<sup>7(b9)</sup> Em Em

A musical staff in treble clef with a key signature of one sharp (F#). It contains eight measures of music, each with a chord symbol above it. The notes are represented by circles on the staff lines. Measure 1: Am7 (A, C, E, G). Measure 2: D7 (D, F#, A, C). Measure 3: Gmaj7 (G, B, D, F). Measure 4: Cmaj7 (C, E, G, B). Measure 5: F#m7(b5) (F#, A, C, E). Measure 6: B7(b9) (B, D, F#, A, C). Measure 7: Em (E, G, B, D). Measure 8: Em (E, G, B, D).

136 F#m<sup>7(b5)</sup> B<sup>7(b9)</sup> Em Em Am<sup>7</sup> D<sup>7</sup> Gmaj<sup>7</sup> Cmaj<sup>7</sup>

A musical staff in treble clef with a key signature of one sharp (F#). It contains eight measures of music, each with a chord symbol above it. The notes are represented by circles on the staff lines. Measure 1: F#m7(b5) (F#, A, C, E). Measure 2: B7(b9) (B, D, F#, A, C). Measure 3: Em (E, G, B, D). Measure 4: Em (E, G, B, D). Measure 5: Am7 (A, C, E, G). Measure 6: D7 (D, F#, A, C). Measure 7: Gmaj7 (G, B, D, F). Measure 8: Cmaj7 (C, E, G, B).

144 F#m<sup>7(b5)</sup> B<sup>7(b9)</sup> Em Cmaj<sup>7</sup> F#m<sup>7(b5)</sup> B<sup>7(b9)</sup> Em E<sup>7</sup>

A musical staff in treble clef with a key signature of one sharp (F#). It contains eight measures of music, each with a chord symbol above it. The notes are represented by circles on the staff lines. Measure 1: F#m7(b5) (F#, A, C, E). Measure 2: B7(b9) (B, D, F#, A, C). Measure 3: Em (E, G, B, D). Measure 4: Cmaj7 (C, E, G, B). Measure 5: F#m7(b5) (F#, A, C, E). Measure 6: B7(b9) (B, D, F#, A, C). Measure 7: Em (E, G, B, D). Measure 8: E7 (E, G#, B, D).