

Trombone/Euph/Baritone

Beginner Band Tunes

Fun Songs for Beginners and Beyond!

1) Shark Attack!

Two staves of musical notation for the song 'Shark Attack!'. The first staff begins with a bass clef and a 4/4 time signature. The melody consists of a half note G2, followed by a quarter rest, a quarter note Bb2, and a quarter rest. The second staff continues with a quarter note G2, a quarter note Bb2, a quarter note G2, and a quarter note F2, ending with a double bar line.

2) Hot Cross Buns

Two staves of musical notation for the song 'Hot Cross Buns'. The first staff begins with a bass clef and a 4/4 time signature. The melody consists of a half note G2, a quarter note A2, a quarter note Bb2, and a quarter note G2. The second staff continues with a quarter note F2, a quarter note G2, a quarter note A2, and a quarter note Bb2, ending with a double bar line.

3) Pierrot (Au Claire De La Lune)

Two staves of musical notation for the song 'Pierrot (Au Claire De La Lune)'. The first staff begins with a bass clef and a 4/4 time signature. The melody consists of a half note G2, a quarter note A2, a quarter note Bb2, and a quarter note G2. The second staff continues with a quarter note F2, a quarter note G2, a quarter note A2, and a quarter note Bb2, ending with a double bar line.

4) Merrily We Roll Along

Two staves of musical notation for the song 'Merrily We Roll Along'. The first staff begins with a bass clef and a 4/4 time signature. The melody consists of a half note G2, a quarter note A2, a quarter note Bb2, and a quarter note G2. The second staff continues with a quarter note F2, a quarter note G2, a quarter note A2, and a quarter note Bb2, ending with a double bar line.

5) Minor Buns

Two staves of musical notation in bass clef, 4/4 time, and B-flat major. The first staff contains four measures of music, and the second staff contains four measures. The melody consists of quarter and half notes.

6) We Will Rock You

Repeat Sign:
Go back to the beginning and play again.

One staff of musical notation in bass clef, 4/4 time, and B-flat major. The melody features eighth notes and rests. A repeat sign is at the end, with an arrow pointing to the 'Repeat Sign' text box above.

7) "Let's Go" Cheer #1

One staff of musical notation in bass clef, 4/4 time, and B-flat major. The melody is simple, with 'x' marks above the notes indicating claps or stomps. There are two such marks in the first two measures and two in the last two measures.

8) "Let's Go" Cheer #2

One staff of musical notation in bass clef, 4/4 time, and B-flat major. The melody is simple, with 'x' marks above the notes indicating claps or stomps. There are two such marks in the first two measures and two in the last two measures.

9) "Here We Go" Cheer

With a Swing

One staff of musical notation in bass clef, 4/4 time, and B-flat major. The melody is simple, with 'x' marks above the notes indicating stomps. There are two such marks in the second measure and two in the fourth measure.

10) Seven Nation Army

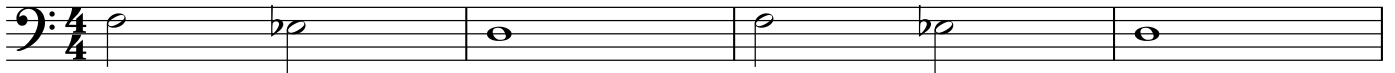
Two staves of musical notation in bass clef, 4/4 time, and B-flat major. The melody features eighth notes and triplets. The first staff has two triplet markings, and the second staff has two triplet markings.

11) Another One Bites the Dust

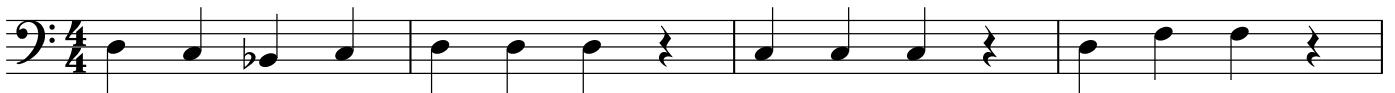


12) Hot Cross Buns Harmony

(Play as duet with a friend playing #2 Hot Cross Buns)




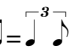
13) Mary Had a Little Lamb



14) Louie Louie



15) Hey!

Swing  = 



16) Musical "Stingers"

a) Shave and a Haircut



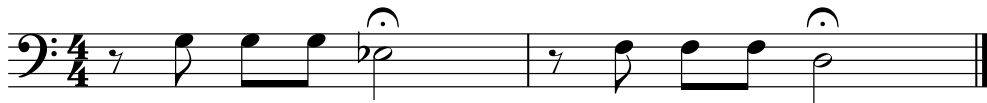
b) Wah-Wah-Wah-Wahhhh



c) Funeral March (Chopin)



d) Ominous Beethoven's 5th Theme



e) Charge!



f) Cartoon Ending



17) Eye of the Tiger

Two staves of musical notation for 'Eye of the Tiger'. The first staff is a single melodic line in bass clef, 4/4 time, with a key signature of one flat. The second staff is a bass line in bass clef, 4/4 time, with a key signature of one flat, featuring chords and rests.

18) Go Tell Aunt Rhody

Two staves of musical notation for 'Go Tell Aunt Rhody'. The first staff is a single melodic line in bass clef, 4/4 time, with a key signature of one flat. The second staff is a bass line in bass clef, 4/4 time, with a key signature of one flat, featuring chords and rests.

19) Minor Mary

Two staves of musical notation for 'Minor Mary'. The first staff is a single melodic line in bass clef, 4/4 time, with a key signature of two flats. The second staff is a bass line in bass clef, 4/4 time, with a key signature of two flats, featuring chords and rests.

20) Twinkle Twinkle

21) Frere Jacques (Brother John)

22) London Bridge

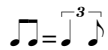
23) The Shark Returns

24) London Bridge Harmony

(Play as duet with a friend playing #22 London Bridge)

Two staves of musical notation in bass clef, 4/4 time, key of B-flat major. The first staff contains the first four measures, and the second staff contains the next four measures. The melody consists of quarter and eighth notes.

25) Let's Go Band

Swing 

Two staves of musical notation in bass clef, 4/4 time, key of B-flat major. The first staff contains the first four measures, and the second staff contains the next four measures. The second ending of the second staff includes first and second endings. The melody features triplets and accents.

Let's Go Band!

26) Ode to Joy (from Beethoven's 9th Symphony)

Four staves of musical notation in bass clef, 4/4 time, key of C major. The melody is a simple, joyful sequence of notes: C4, D4, E4, F4, G4, A4, B4, C5, B4, A4, G4, F4, E4, D4, C4.

27) Largo Theme from New World Symphony (Dvorak)



28) Baa Baa Black Sheep



29) Long Long Ago



30) Old MacDonald

Three staves of musical notation for 'Old MacDonald' in bass clef, 4/4 time, and B-flat major. The first staff contains the first six measures. The second staff contains the next six measures, including a double bar line. The third staff contains the final six measures, ending with a double bar line.

31) When the Saints Go Marching In

Three staves of musical notation for 'When the Saints Go Marching In' in bass clef, 4/4 time, and B-flat major. The first staff contains the first six measures. The second staff contains the next six measures. The third staff contains the final six measures, ending with a double bar line.

32) America (My Country 'Tis of Thee)

Three staves of musical notation for 'America (My Country 'Tis of Thee)' in bass clef, 3/4 time, and B-flat major. The first staff contains the first six measures. The second staff contains the next six measures. The third staff contains the final six measures, ending with a double bar line.

33) Jingle Bells

Musical notation for "Jingle Bells" in bass clef, 4/4 time. The piece consists of two first endings. The first ending starts with a treble clef and a key signature of one flat (B-flat), and ends with a repeat sign. The second ending starts with a bass clef and a key signature of one flat, and ends with a double bar line.

34) Good King Wenceslas

Key Signature:
Instead of placing flats and sharps on individual notes, they are placed at the beginning of the music, and apply to the entire song. This is called the "key signature". Circle all the notes that are changed by the key signature in this song.

Musical notation for "Good King Wenceslas" in bass clef, 4/4 time. The key signature is two flats (B-flat and E-flat). The notation consists of three lines of music, each ending with a double bar line.

35) Dreidel Song

Musical notation for "Dreidel Song" in bass clef, 4/4 time. The key signature is two flats (B-flat and E-flat). The notation consists of three lines of music, each ending with a double bar line.

36) Jolly Old St. Nicholas

Musical notation for 'Jolly Old St. Nicholas' in bass clef, 4/4 time, key of B-flat major. The piece consists of two staves. The first staff contains the first eight measures. The second staff contains two first endings: the first ending covers measures 9-12, and the second ending covers measures 13-16. The piece concludes with a double bar line.

37) Up on the Housetop

Musical notation for 'Up on the Housetop' in bass clef, 2/4 time, key of B-flat major. The piece consists of four staves of music. The first staff contains measures 1-4, the second staff contains measures 5-8, the third staff contains measures 9-12, and the fourth staff contains measures 13-16. The piece concludes with a double bar line.

38) Sevivon (Spin, My Top)

Accidental:
 An "accidental" is when a sharp, flat, or natural is placed in a song to temporarily change the note from the given key signature. The accidental stays in effect for the full measure. Circle all of the notes in this song that are changed by the accidentals.

Musical notation for 'Sevivon (Spin, My Top)' in bass clef, 4/4 time, key of B-flat major. The piece consists of three staves of music. The first staff contains measures 1-4, the second staff contains measures 5-8, and the third staff contains measures 9-12. The piece concludes with a double bar line. There are accidentals (sharps) on the notes G and F in measures 8 and 11, which are to be circled according to the instructions.

39) This Old Man

Two staves of musical notation for 'This Old Man'. The first staff begins with a bass clef, a key signature of two flats (B-flat and E-flat), and a 4/4 time signature. The melody consists of quarter and eighth notes. The second staff continues the melody with eighth and sixteenth notes, ending with a double bar line.

40) Mexican Hat Dance

Two staves of musical notation for 'Mexican Hat Dance'. The first staff begins with a bass clef, a key signature of two flats (B-flat and E-flat), and a 3/4 time signature. The melody features quarter notes and rests. The second staff continues the melody, ending with a double bar line.

41) Algerian Dance (Snake Charmer Song)

Three staves of musical notation for 'Algerian Dance (Snake Charmer Song)'. The first staff begins with a bass clef, a key signature of two flats (B-flat and E-flat), and a 2/4 time signature. The melody is characterized by eighth and sixteenth notes with accents. The second and third staves continue the melody, ending with a double bar line.

42) Arirang (Korean Folk Song)

Two staves of musical notation for 'Arirang (Korean Folk Song)'. The first staff begins with a bass clef, a key signature of two flats (B-flat and E-flat), and a 3/4 time signature. The melody features quarter notes and eighth notes with slurs. The second staff continues the melody, ending with a double bar line.