

Samba Otoño

Dr. Selfridge

Medium Samba

♩ = 96

Improv Option 1: Major Blues Scale

33

Use the b3 only as a passing or neighbor tone

Solo Ideas

40

46

Improv Option 2: Major Scale

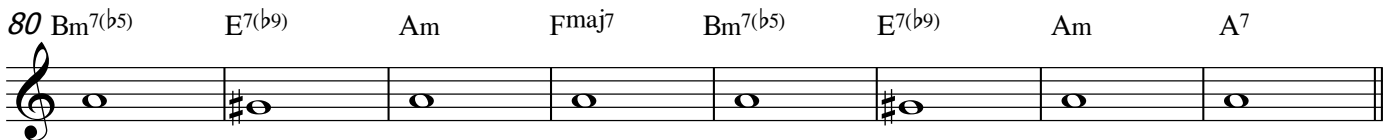
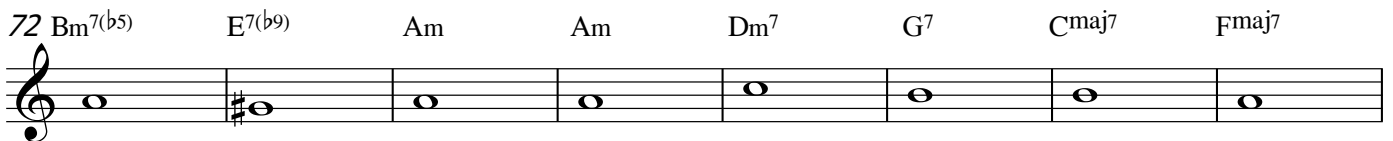
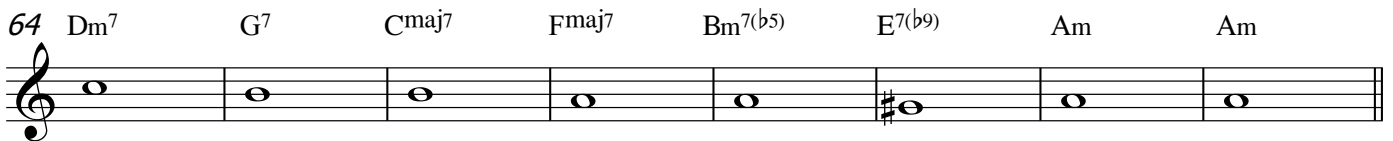
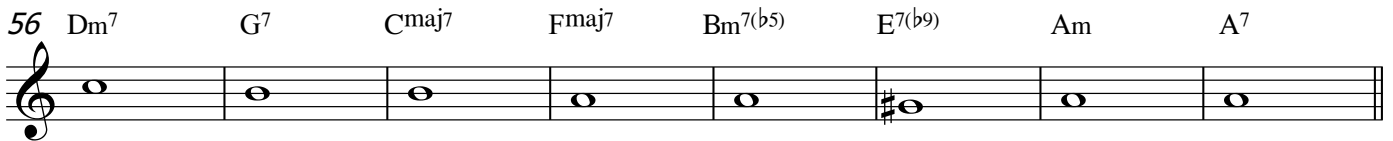
52



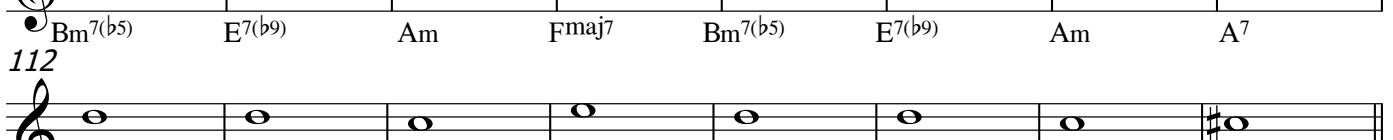
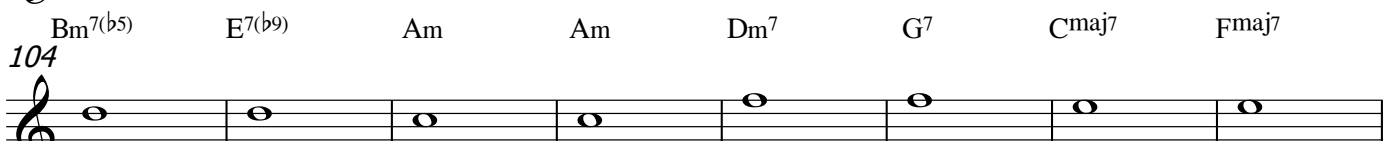
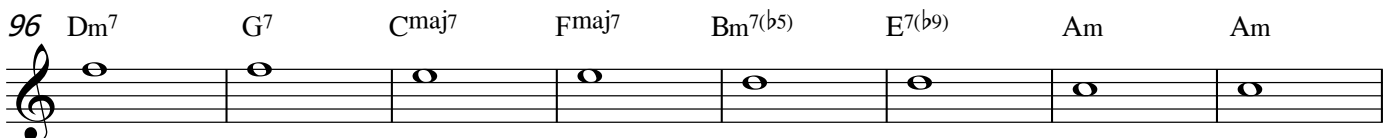
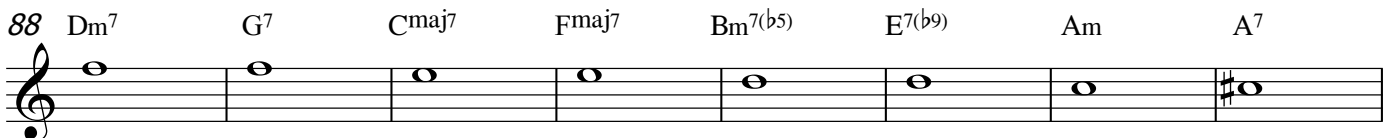
We can use the entire major scale, while emphasizing CHORD TONES as they change each measure. The series of chord tones written below is called a GUIDE TONE LINE. This means each chord tone moves smoothly to the next, usually by step.

CHORD TONES consist of the 1-3-5-7 of the chord. The chord tone that we begin with below is the seventh (7) of the first chord.

Guide Tone Line 1



Guide Tone Line 2



LEVEL UP: Learn the Chord Tones for Every Chord

120 Dm⁷ G⁷ Cmaj⁷ Fmaj⁷ Bm⁷(b⁵) E⁷(b⁹) Am A⁷

128 Dm⁷ G⁷ Cmaj⁷ Fmaj⁷ Bm⁷(b⁵) E⁷(b⁹) Am Am

136 Bm⁷(b⁵) E⁷(b⁹) Am Am Dm⁷ G⁷ Cmaj⁷ Fmaj⁷

144 Bm⁷(b⁵) E⁷(b⁹) Am Fmaj⁷ Bm⁷(b⁵) E⁷(b⁹) Am A⁷